

# The Human Eye

Scientists have found that originally all humans had brown eyes. All people who have blue eyes have a common ancestor who was born 6000-10000 years ago with a genetic mutation!

You could try to find out:

- what a genetic mutation is;
- how your eye colour is linked to your health and abilities;
- if pupula duplex is a real syndrome;
- how irises are used for security purposes.

Our eyes are amazing! You can check out different parts of the eye by looking at your own eye in the mirror or by looking at (but not touching) a friend's eye. Have a go at sketching your or your friend's eye. Pay close attention to the wonderful detail and light and shadows.

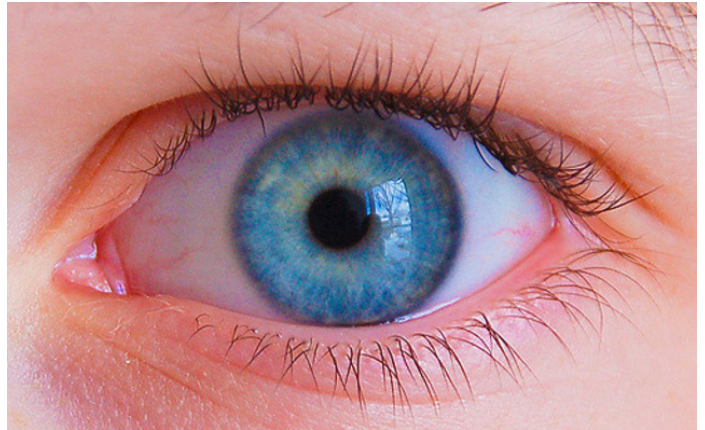


Photo courtesy of Katherine Gruender (fourplusadragon@flickr.com)  
- granted under creative commons licence - attribution

Top tips for sketching your eye:

- Start by drawing the outline, which shows the shape.
- Leave light reflections close to the pupil.
- Use layers to shade in the pupil.
- Use lines to show the highlights and shadows that the iris has.

